



WAVEGUIDE LOAD TERMINATIONS

SLIDING LOADS

Standard Rectangular

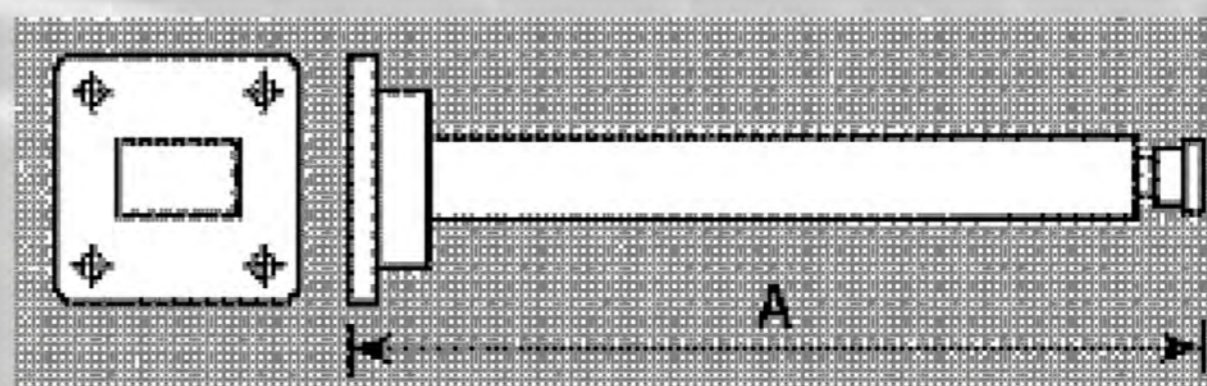
Specification:

VSWR: See table (based on spot frequency Operation)

Material: Brass

Load Material: Iron Loaded Resin

Finish: Blue Paint, Silver Plated Flanges



Operating Frequency Band (GHz)	Waveguide Designation			PART NUMBER	Max V.S.W.R.	Max Power Watts C.W.	Overall Length "A" (mm)
	UK WG	IEC R	E.I.A. WR				
2.60 – 3.95	10	32	284	SL 10 –SQB- (***)-B	1.01	3	790
3.30 – 4.90	11A	40	229	SL 11A –SQB- (***)-B	1.01	2	526
3.95 – 5.85	12	48	187	SL 12 –SQB- (***)-B	1.01	2	414
4.90 – 7.05	13	58	159	SL 13 –SQB- (***)-B	1.01	2	332
5.85 – 8.20	14	70	137	SL 14 –SQB- (***)-B	1.01	1	336
7.05 – 10.0	15	84	112	SL 15 –SQB- (***)-B	1.01	1	323
8.20 – 12.40	16	100	90	SL 16 –SQB- (***)-B	1.01	0.8	331
10.0 – 15.0	17	120	75	SL 17 –SQB- (***)-B	1.01	0.8	321
12.4 – 18.0	18	140	62	SL 18 –SQB- (***)-B	1.01	0.6	321
15.0 – 22.0	19	180	51	SL 19 –SQB- (***)-B	1.02	0.6	225
18.0 – 26.5	20	220	42	SL 20 –SQB- (***)-B	1.02	0.6	107
22.0 – 33.0	21	260	34	SL 21 –SQB- (***)-B	1.02	0.6	107
26.5 – 40.0	22	320	28	SL 22 –SQB- (***)-B	1.035	0.5	100

*** For 3 Digit Rectangular Flange part number, refer to the 1999 Catalogue, or consult the factory.

FIXED LOADS

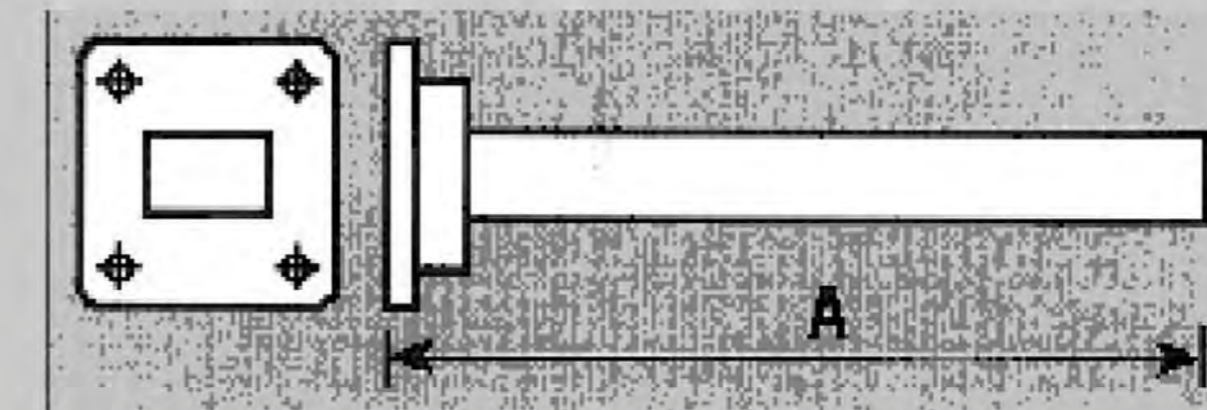
Standard Rectangular

Specification:

Body Material: Brass

Load Material: Iron Loaded Resin

Finish: Blue Paint, Silver Plated Flanges



Operating Frequency Band (GHz)	Waveguide Designation			PART NUMBER	Max V.S.W.R.	Max Power Watts C.W.	Overall Length "A" (mm)
	UK WG	IEC R	E.I.A. WR				
2.60 – 3.95	10	32	284	FL 10 –SQB- (***)-B	1.02	5	540
3.30 – 4.90	11A	40	229	FL 11A –SQB- (***)-B	1.02	4	440
3.95 – 5.85	12	48	187	FL 12 –SQB- (***)-B	1.02	3.5	407
4.90 – 7.05	13	58	159	FL 13 –SQB- (***)-B	1.02	3.5	350
5.85 – 8.20	14	70	137	FL 14 –SQB- (***)-B	1.02	2	305
7.05 – 10.0	15	84	112	FL 15 –SQB- (***)-B	1.02	2	250
8.20 – 12.40	16	100	90	FL 16 –SQB- (***)-B	1.02	1.3	210
10.0 – 15.0	17	120	75	FL 17 –SQB- (***)-B	1.02	1.3	195
12.4 – 18.0	18	140	62	FL 18 –SQB- (***)-B	1.02	1	169
15.0 – 22.0	19	180	51	FL 19 –SQB- (***)-B	1.025	1	150
17.7 – 26.5	20	220	42	FL 20 –SQB- (***)-B	1.035	0.8	128
22.0 – 33.0	21	260	34	FL 21 –SQB- (***)-B	1.035	0.8	128
26.5 – 40.0	22	320	28	FL 22 –SQB- (***)-B	1.05	0.6	100

*** For 3 Digit Rectangular Flange part number, refer to the 1999 Catalogue, or consult the factory.

FIXED LOADS

Double Ridge

Specification:

Body Material:	Aluminium Alloy
Load Material:	Iron Loaded Resin
Finish:	Blue Paint, Chromated / Iridited
	Aluminium Flanges

Operating Frequency Band (GHz)	Waveguide Designation	Part Number	Max V.S.W.R.	Max Power Watts C.W.	Overall Length "A" (mm)
4.75 – 11.0	WRD475 D24	FL 475-SQH- (***)-A	1.04	11	386
5.8 – 16.0	WRD580 D28	FL 580-SQH- (***)-A	1.04	8	300
6.5 – 18.0	WRD650 D28	FL 650-SQH- (***)-A	1.05	7	252
7.5 – 18.0	WRD750 D24	FL 750-SQH- (***)-A	1.05	7	237
18.0 – 40.0	WRD180 C24	FL 180-SQH- (***)-A	1.06	5	128

*** For 3 digit Double Ridge Waveguide Flange Part number, please consult the factory.

HIGH POWER FIXED LOADS

Standard Rectangular

Specification:

Pressurisation:	Up to 50psi if required (please specify)
Body Material:	Brass/Aluminium Alloy Tube/ Aluminium Alloy
Load Material:	Silicon Carbide
Finish:	Matt Black Paint / Chromated / Iridited Aluminium Flanges

Operating Frequency Band (GHz)	Waveguide Designation			PART NUMBER	Max V.S.W.R.
	UK WG	IEC R	E.I.A. WR		
2.60 – 3.95	10	32	284	FL 10-HBH- (***)-B	1.1
3.30 – 4.90	11A	40	229	FL 11A-HBH- (***)-B	1.1
3.95 – 5.85	12	48	187	FL 12-HBH- (***)-B	1.1
4.90 – 7.05	13	58	159	FL 13-HBH- (***)-B	1.1
5.85 – 8.20	14	70	137	FL 14-HBH- (***)-B	1.1
7.05 – 10.0	15	84	112	FL 15-HBH- (***)-B	1.1
8.20 – 12.40	16	100	90	FL 16-HBH- (***)-B	1.1
10.0 – 15.0	17	120	75	FL 17-HBB- (***)-B	1.1
12.4 – 18.0	18	140	62	FL 18-HBB- (***)-B	1.1
18.0 – 26.5	20	220	42	FL 20-HBB- (***)-B	1.1
26.5 – 40.0	22	320	28	FL 22-HBB- (***)-B	1.1

*** For 3 Digit Rectangular Flange part number, refer to the Flange catalogue, or consult the factory.

